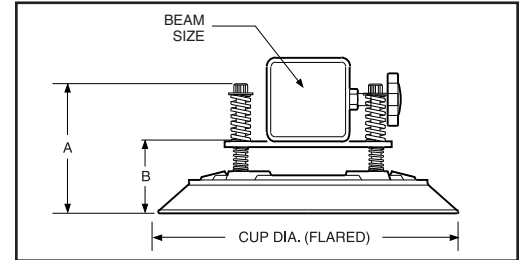


Vacuum Cup Suspension Assemblies

Quad-Mount Spring-Loaded Series



ANVER's larger vacuum cups and vacuum pads can be mounted using a quad spring suspension assembly. This mounting configuration ensures consistent attachment by allowing for adjustment to uneven or slightly tilted surfaces. A wide variety of slides are available for mounting to most standard load beam and crossarm sizes. For use with Large VC Series Cups and Large VP Series Pads.



Suspension Assembly Number	Slide Size in. (mm)	Cup Dia. in. (mm)	A in. (mm)	B in. (mm)	Rated Load* lb (kg)	Vacuum Cup Number
PS95Q-NBR175	1.75 x 1.75 (44 x 44)	10.00 (254)	5.31 (135)	3.50 (89)	250 (113.6)	VC95Q
PS95Q-GR175	1.75 x 1.75 (44 x 44)	10.00 (254)	5.31 (135)	3.50 (89)	250 (113.6)	VC95Q
PS119Q-NBR200	2.00 x 2.00 (51 x 51)	12.50 (318)	5.50 (140)	3.78 (96)	500 (227.3)	VC119Q
PS1119Q-GR200	2.00 x 2.00 (51 x 51)	12.50 (318)	5.50 (140)	3.78 (96)	500 (227.3)	VC119Q
PS125Q-NBR200	2.00 x 2.00 (51 x 51)	13.00 (330)	5.50 (140)	3.78 (96)	500 (227.3)	VC125Q-2
PS125Q-GR200	2.00 x 2.00 (51 x 51)	13.00 (330)	5.50 (140)	3.78 (96)	500 (227.3)	VC125Q-2
PS119Q-NBR300	3.00 x 3.00 (76 x 76)	12.50 (318)	5.50 (140)	3.78 (96)	500 (227.3)	VC119Q
PS119Q-GR300	3.00 x 3.00 (76 x 76)	12.50 (318)	5.50 (140)	3.78 (96)	500 (227.3)	VC119Q
PS125Q-NBR300	3.00 x 3.00 (76 x 76)	13.00 (330)	5.50 (140)	3.78 (96)	500 (227.3)	VC125Q-2
PS125Q-GR300	3.00 x 3.00 (76 x 76)	13.00 (330)	5.50 (140)	3.78 (96)	500 (227.3)	VC125Q-2
PS119Q-NBR360	3.00 x 6.00 (76 x 152)	12.50 (318)	6.30 (160)	4.94 (125)	600 (272.0)	VC119Q
PS119Q-GR360	3.00 x 6.00 (76 x 152)	12.50 (318)	6.30 (160)	4.94 (125)	600 (272.0)	VC119Q
PS125Q-NBR360	3.00 x 6.00 (76 x 152)	13.00 (330)	6.30 (160)	4.94 (125)	600 (272.0)	VC125Q-2
PS125Q-GR360	3.00 x 6.00 (76 x 152)	13.00 (330)	6.30 (160)	4.94 (125)	600 (272.0)	VC125Q-2
PS90Q-NBR175	1.75 x 1.75 (44 x 44)	9.25 (235)	4.98 (127)	3.67 (93)	275 (125.0)	VP90Q

► This spec sheet was adapted for print from our website. Additional information and photos are available at www.anver.com. 0151801