



# Ergonomic Vacuum Tube Lifters

## Vacuum Lifting Tubes



### Replacement Lift Tube Sets

ANVER Vacuum Lift Tube Set Assemblies are available as easy to install replacements for existing vacuum tube lifting installations. Supplied as assembled units, they are ready to quickly hang from your overhead or jib crane. Simply attach your vacuum supply hose to the top swivel and mount your existing vacuum pad attachment to the control head and you're ready to resume your lifting operations.

ANVER Vacuum Lift Tube Set Assemblies make the replacement of worn out lift tubes a simple task. Sets are supplied with the top swivel, lift tube and control head completely assembled as a unit. The control head features an industry standard bolt mounting pattern that accommodates virtually all competitive vacuum pad attachments (also known as "feet" by some manufacturers).

Vacuum Lift Tube Set Assemblies consist of a high quality ANVER Vacuum Lift Tube with ANVER Top Swivel and Control Head attached. An ANVER Tube Lift Cover is also provided to prevent damage and wear and allows you to easily complete the installation of a replacement lift tube set with a professional appearance. As the leading North American manufacturer of Vacuum Tube Lifting Systems, ANVER can offer these high quality replacement vacuum lifting tube sets at prices substantially lower than those of secondary suppliers or expensive imported brands. Contact ANVER for pricing information on Vacuum Lift Tube Set Assemblies for your vacuum tube lifter.

Vacuum Lift Tube Assembly Set No.	Tube Length in. (m)	Vacuum Lift Tube Assembly Replacement Part Numbers							
		Lift Tube No.	Top Swivel No.	Control Head No.	Conversion Kit No.	Duct Clamps for Lift Tube No.	Qty	Rubber Clamping Trim Band No.	Qty
VT090-2.5-A	99 (2.5)	LT090-2.5	VTSW090	VTVH090	-	CLP-100-D	3	RCB-090/100	2
VT090-4.0-A	158 (4.0)	LT090-4.0	VTSW090	VTVH090	-	CLP-100-D	3	RCB-090/100	2
VT100-2.5-A	99 (2.5)	LT100-2.5	VTSW100	VTVH100	VTCK-100-2.5	CLP-100-D	3	RCB-090/100	2
VT100-4.0-A	158 (4.0)	LT100-4.0	VTSW100	VTVH100	VTCK-100-4.0	CLP-100-D	3	RCB-090/100	2
VT120-2.5-A	99 (2.5)	LT120-2.5	VTSW120	VTVH120	VTCK-120-2.5	CLP-120-D	3	RCB-120/140	2
VT120-4.0-A	158 (4.0)	LT120-4.0	VTSW120	VTVH120	VTCK-120-4.0	CLP-120-D	3	RCB-120/140	2
VT140-2.5-A	99 (2.5)	LT140-2.5	VTSW140	VTVH140	VTCK-140-2.5	CLP-140-D	3	RCB-120/140	2
VT140-4.0-A	158 (4.0)	LT140-4.0	VTSW140	VTVH140	VTCK-140-4.0	CLP-140-D	3	RCB-120/140	2
VT160-2.5-A	99 (2.5)	LT160-2.5	VTSW160	VTVH160	VTCK-160-2.5	CLP-160-D	3	RCB-160/180	2
VT160-4.0-A	158 (4.0)	LT160-4.0	VTSW160	VTVH160	VTCK-160-4.0	CLP-160-D	3	RCB-160/180	2
VT180-2.5-A	99 (2.5)	LT180-2.5	VTSW180	VTVH180	VTCK-180-2.5	CLP-180/200-D	3	RCB-160/180	2
VT180-4.0-A	158 (4.0)	LT180-4.0	VTSW180	VTVH180	VTCK-180-4.0	CLP-180/200-D	3	RCB-160/180	2

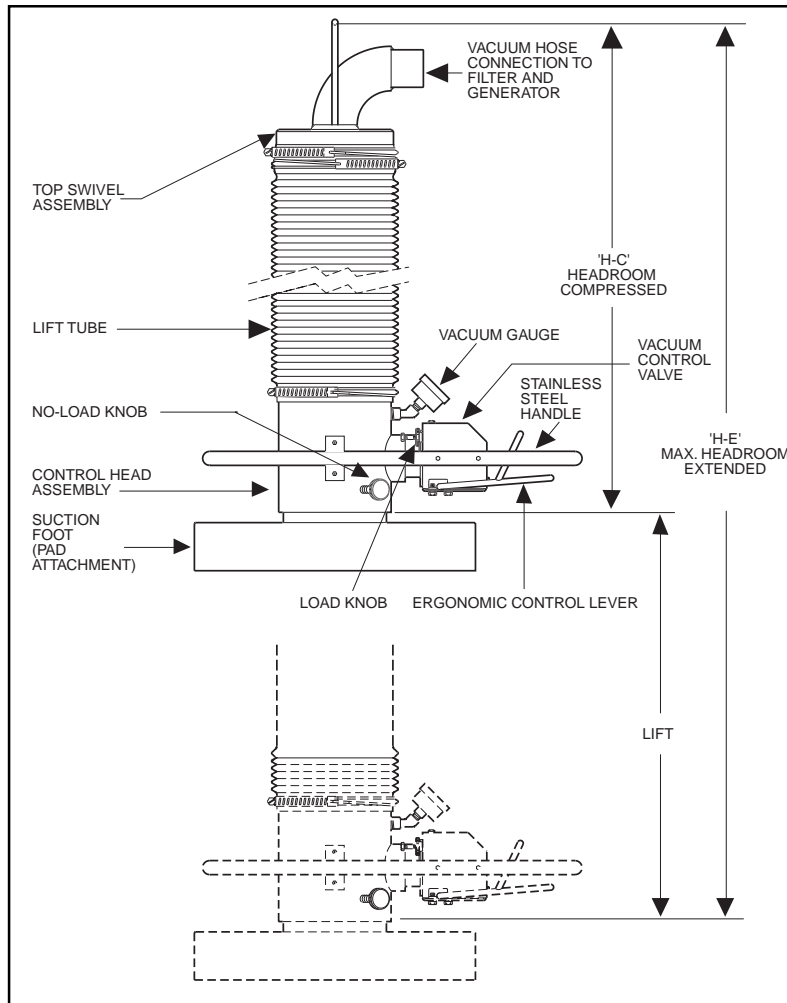
0180301 ➔ This spec sheet was adapted for print from our website. Additional information and photos are available at [www.anver.com](http://www.anver.com).

# Ergonomic Vacuum Tube Lifters



## Vacuum Lifting Tubes

Vacuum Lift Tube Assembly Set No.	Tube Length in. (m)	Vacuum Lift Tube Assembly Replacement Part Numbers							
		Lift Tube No.	Top Swivel No.	Control Head No.	Conversion Kit No.	Duct Clamps for Lift Tube		Rubber Clamping Trim Band	
						No.	Qty	No.	Qty
VT200-2.5-A	99 (2.5)	LT200-2.5	VTSW200	VTVH200	VTCK-200-2.5	CLP-180/200-D	3	RCB-200/250	2
VT200-4.0-A	158 (4.0)	LT200-4.0	VTSW200	VTVH200	VTCK-200-4.0	CLP-180/200-D	3	RCB-200/250	2
VT250-2.5-A	99 (2.5)	LT250-2.5	VTSW250	VTVH250	VTCK-250-2.5	CLP-250-TC	6	RCB-200/250	2
VT250-4.0-A	158 (4.0)	LT250-4.0	VTSW250	VTVH250	VTCK-250-4.0	CLP-250-TC	6	RCB-200/250	2
VT2200-2.5-A	99 (2.5)	LT200-2.5	VTSW2200	VTVH2200	-	CLP-180/200-D	6	RCB-200/250	2
VT2200-4.0-A	158 (4.0)	LT200-4.0	VTSW2200	VTVH2200	-	CLP-180/200-D	6	RCB-200/250	2



► This spec sheet was adapted for print from our website. Additional information and photos are available at [www.anver.com](http://www.anver.com). 0180301



# Ergonomic Vacuum Tube Lifters

## Vacuum Lifting Tubes

### Vacuum Lift Tube Dimensions

Vacuum Lift Tube Assembly Set No.	Dimensions		
	Lift in. (cm)	Extended Height (HE) in. (cm)	Compressed Height (HC) in. (cm)
VT090-2.5-A	66 (167)	110 (280)	44 (112)
VT090-4.0-A	105 (267)	169 (430)	64 (163)
VT100-2.5-A	66 (167)	108 (275)	42 (108)
VT100-4.0-A	105 (267)	167 (425)	62 (158)
VT120-2.5-A	66 (167)	109 (277)	43 (110)
VT120-4.0-A	105 (267)	168 (427)	63 (160)
VT140-2.5-A	66 (167)	109 (277)	43 (110)
VT140-4.0-A	105 (267)	168 (427)	63 (160)
VT160-2.5-A	66 (167)	111 (282)	45 (115)
VT160-4.0-A	105 (267)	170 (432)	65 (165)
VT180-2.5-A	66 (167)	113 (287)	47 (120)
VT180-4.0-A	105 (267)	172 (437)	67 (170)
VT200-2.5-A	66 (167)	113 (287)	47 (120)
VT200-4.0-A	105 (267)	172 (437)	67 (170)
VT250-2.5-A	58 (147)	113 (287)	55 (140)
VT250-4.0-A	96 (234)	172 (437)	80 (203)
VT2200-2.5-A	66 (167)	122 (310)	56 (143)
VT2200-4.0-A	105 (267)	181 (460)	76 (193)

0180301 ➤ This spec sheet was adapted for print from our website. Additional information and photos are available at [www.anver.com](http://www.anver.com).

36 Parmenter Road • Hudson MA 01749 USA • 978-568-0221 • 800-654-3500 • FAX 978-568-1570 • [www.anver.com](http://www.anver.com) • E-Mail: [sales@anver.com](mailto:sales@anver.com)