



These Vacuum Cups and Suction Cups are Directly Interchangeable for OEMs

Features:

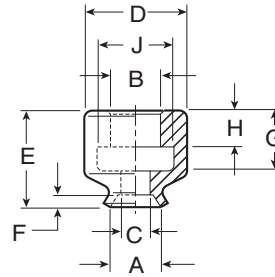
- Flat Design Handles Most Smooth Surface Applications
- Suitable for both Vertical and Horizontal Lifting
- Low Profile Design Offers Fast Response Time for Short Cycles
- Diameters from 0.08" to 7.87" (2mm to 200mm)

Applications:

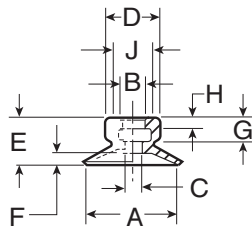
Any Flat, Smooth Surface that needs stability and a fast response time. Versatile for use in numerous industries. Specific typical applications could include: computer chips, electrical components, semiconductor chips, sheet metal, glass, injection molding, woodworking, etc.

Material Codes:

NBR: Nitrile SIT: Silicone
 PUR: Urethane FPM: Viton®



ANVER Item No.	øA in. (mm)	øB in. (mm)	øC in. (mm)	øD in. (mm)	E in. (mm)	F in. (mm)	G in. (mm)	H in. (mm)	øJ in. (mm)
C-F2-NBR PFG2-NBR	0.08 (2)	0.08 (2)	0.05 (1.2)	0.16 (4)	0.16 (4)	0.02 (0.5)	0.10 (2.5)	0.06 (1.5)	0.12 (3)
C-F2-SIT PFG2-SIT	0.08 (2)	0.08 (2)	0.05 (1.2)	0.16 (4)	0.16 (4)	0.02 (0.5)	0.10 (2.5)	0.06 (1.5)	0.12 (3)
C-F3.5A-NBR PFG3.5A-NBR	0.14 (3.5)	0.08 (2)	0.05 (1.2)	0.16 (4)	0.16 (4)	0.02 (0.5)	0.10 (2.5)	0.06 (1.5)	0.12 (3)
C-F3.5A-SIT PFG3.5A-SIT	0.14 (3.5)	0.08 (2)	0.05 (1.2)	0.16 (4)	0.16 (4)	0.02 (0.5)	0.10 (2.5)	0.06 (1.5)	0.12 (3)
C-F3.5A-FPM PFG3.5A-FPM	0.14 (3.5)	0.08 (2)	0.05 (1.2)	0.16 (4)	0.16 (4)	0.02 (0.5)	0.10 (2.5)	0.06 (1.5)	0.12 (3)



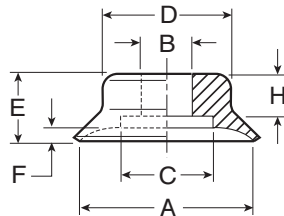
ANVER Item No.	øA in. (mm)	øB in. (mm)	øC in. (mm)	øD in. (mm)	E in. (mm)	F in. (mm)	G in. (mm)	H in. (mm)	øJ in. (mm)
C-F5-NBR PFG5-NBR	0.20 (5)	0.16 (4)	0.06 (1.4)	0.30 (7.5)	0.26 (6.5)	0.03 (0.8)	0.16 (4)	0.08 (2)	0.24 (6)
C-F5-SIT PFG5-SIT	0.20 (5)	0.16 (4)	0.06 (1.4)	0.30 (7.5)	0.26 (6.5)	0.03 (0.8)	0.16 (4)	0.08 (2)	0.24 (6)

Vacuum Cups and Suction Cups



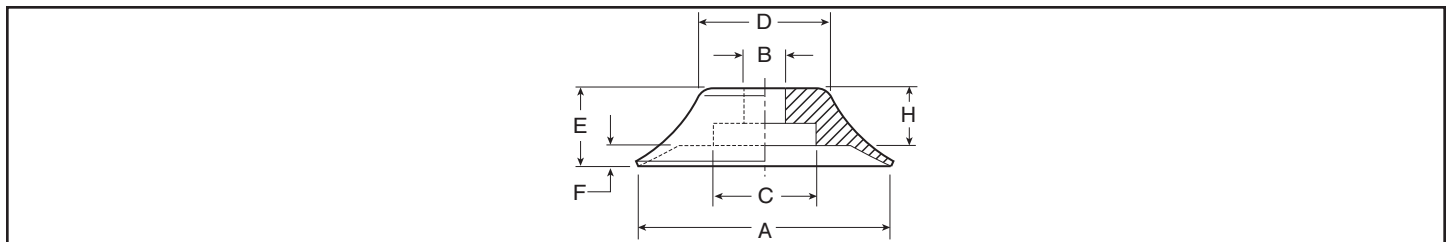
C-F Flat Vacuum Cups

ANVER Item No.	øA in. (mm)	øB in. (mm)	øC in. (mm)	øD in. (mm)	E in. (mm)	F in. (mm)	G in. (mm)	H in. (mm)	øJ in. (mm)
C-F6-NBR PFG6-NBR	0.24 (6)	0.16 (4)	0.08 (2)	0.30 (7.5)	0.26 (6.5)	0.03 (0.8)	0.16 (4)	0.08 (2)	0.24 (6)
C-F6-SIT PFG6-SIT	0.24 (6)	0.16 (4)	0.08 (2)	0.30 (7.5)	0.26 (6.5)	0.03 (0.8)	0.16 (4)	0.08 (2)	0.24 (6)
C-F8-NBR PFG8-NBR	0.31 (8)	0.16 (4)	0.08 (2)	0.31 (8)	0.28 (7)	0.05 (1.2)	0.16 (4)	0.08 (2)	0.24 (6)
C-F8-SIT PFG8-SIT	0.31 (8)	0.16 (4)	0.08 (2)	0.31 (8)	0.28 (7)	0.05 (1.2)	0.16 (4)	0.08 (2)	0.24 (6)
C-F8-PUR PFG8-PUR	0.31 (8)	0.16 (4)	0.08 (2)	0.31 (8)	0.28 (7)	0.05 (1.2)	0.16 (4)	0.08 (2)	0.24 (6)
C-F10-NBR PFG10-NBR	0.39 (10)	0.16 (4)	0.08 (2)	0.33 (8.5)	0.30 (7.5)	0.06 (1.5)	0.16 (4)	0.08 (2)	0.24 (6)
C-F10-SIT PFG10-SIT	0.39 (10)	0.16 (4)	0.08 (2)	0.33 (8.5)	0.30 (7.5)	0.06 (1.5)	0.16 (4)	0.08 (2)	0.24 (6)
C-F10-PUR PFG10-PUR	0.39 (10)	0.16 (4)	0.08 (2)	0.33 (8.5)	0.30 (7.5)	0.06 (1.5)	0.16 (4)	0.08 (2)	0.24 (6)
C-F10-FPM PFG10-FPM	0.39 (10)	0.16 (4)	0.08 (2)	0.33 (8.5)	0.30 (7.5)	0.06 (1.5)	0.16 (4)	0.08 (2)	0.24 (6)
C-F15-NBR PFG15-NBR	0.62 (15.7)	0.18 (4.5)	N/A	0.47 (12)	0.31 (8)	0.079 (2)	0.14 (3.5)	N/A	0.31 (8)
C-F15-SIT PFG15-SIT	0.62 (15.7)	0.18 (4.5)	N/A	0.47 (12)	0.31 (8)	0.079 (2)	0.14 (3.5)	N/A	0.31 (8)

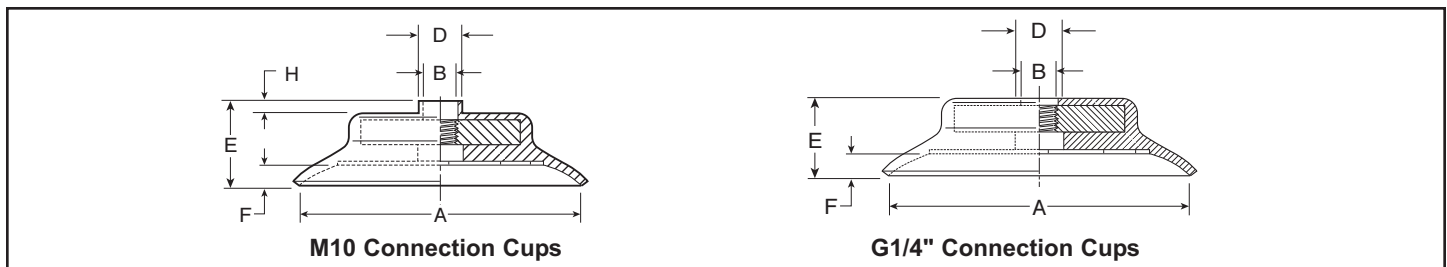


ANVER Item No.	øA in. (mm)	øB in. (mm)	øC in. (mm)	øD in. (mm)	E in. (mm)	F in. (mm)	H in. (mm)
C-F20-NBR PFG20-NBR	0.82 (20.9)	0.22 (5.5)	0.43 (11)	0.59 (15)	0.39 (10)	0.085 (2.17)	0.18 (4.6)
C-F20-SIT PFG20-SIT	0.82 (20.9)	0.22 (5.5)	0.43 (11)	0.59 (15)	0.39 (10)	0.085 (2.17)	0.18 (4.6)
C-F30-NBR PFG30-NBR	1.18 (30)	0.24 (6)	0.43 (11)	0.55 (14)	0.47 (12)	0.08 (2)	0.28 (7)
C-F30-SIT PFG30-SIT	1.18 (30)	0.24 (6)	0.43 (11)	0.55 (14)	0.47 (12)	0.08 (2)	0.28 (7)

ANVER Item No.	øA in. (mm)	øB in. (mm)	øC in. (mm)	øD in. (mm)	E in. (mm)	F in. (mm)	H in. (mm)
C-F35-NBR PFG35-NBR	1.38 (35)	0.24 (6)	0.43 (11)	0.83 (21)	0.55 (14)	0.12 (3)	0.28 (7)
C-F35-SIT PFG35-SIT	1.38 (35)	0.24 (6)	0.43 (11)	0.83 (21)	0.55 (14)	0.12 (3)	0.28 (7)
C-F40-NBR PFG40-NBR	1.57 (40)	0.24 (6)	0.43 (11)	0.94 (24)	0.55 (14)	0.16 (4)	0.28 (7)
C-F40-SIT PFG40-SIT	1.57 (40)	0.24 (6)	0.43 (11)	0.94 (24)	0.55 (14)	0.16 (4)	0.28 (7)



ANVER Item No.	øA in. (mm)	øB in. (mm)	øC in. (mm)	øD in. (mm)	E in. (mm)	F in. (mm)	H in. (mm)
C-F50-NBR PFG50-NBR	1.97 (50)	0.31 (8)	0.79 (20)	1.06 (27)	0.59 (15)	0.14 (3.5)	0.28 (7)
C-F50-SIT PFG50-SIT	1.97 (50)	0.31 (8)	0.79 (20)	1.06 (27)	0.59 (15)	0.14 (3.5)	0.28 (7)



M10 Connection Cups

G1/4" Connection Cups

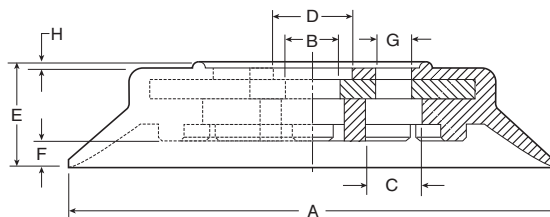
ANVER Item No.	øA in. (mm)	øB	øD in. (mm)	E in. (mm)	F in. (mm)	H in. (mm)
C-F60-NBR-M10 PFG60-NBR-M10	2.36 (60)	M10 x 1.5	0.79 (12.5)	0.73 (18.5)	0.20 (5)	0.10 (2.5)
C-F60-SIT-M10 PFG60-SIT-M10	2.36 (60)	M10 x 1.5	0.79 (12.5)	0.73 (18.5)	0.20 (5)	0.10 (2.5)
C-F60-PUR-M10 PFG60-PUR-M10	2.36 (60)	M10 x 1.5	0.79 (12.5)	0.73 (18.5)	0.20 (5)	0.10 (2.5)
C-F60-NBR-G14 PFG60-NBR-G14	2.36 (60)	G1/4" female	0.79 (12.5)	0.61 (15.5)	0.20 (5)	-

Vacuum Cups and Suction Cups



C-F Flat Vacuum Cups

ANVER Item No.	øA in. (mm)	øB in. (mm)	øD in. (mm)	E in. (mm)	F in. (mm)	H in. (mm)
C-F60-SIT-G14 PFG60-SIT-G14	2.36 (60)	G1/4" female	0.79 (12.5)	0.61 (15.5)	0.20 (5)	-
C-F60-PUR-G14 PFG60-PUR-G14	2.36 (60)	G1/4" female	0.79 (12.5)	0.61 (15.5)	0.20 (5)	-
C-F80-NBR-M10 PFG80-NBR-M10	3.15 (80)	M10 x 1.5	0.79 (12.5)	0.81 (20.5)	0.24 (6)	0.10 (2.5)
C-F80-SIT-M10 PFG80-SIT-M10	3.15 (80)	M10 x 1.5	0.79 (12.5)	0.81 (20.5)	0.24 (6)	0.10 (2.5)
C-F80-NBR-G14 PFG80-NBR-G14	3.15 (80)	G1/4" female	0.79 (12.5)	0.67 (17)	0.24 (6)	-
C-F80-SIT-G14 PFG80-SIT-G14	3.15 (80)	G1/4" female	0.79 (12.5)	0.67 (17)	0.24 (6)	-
C-F95-NBR-M10 PFG95-NBR-M10	3.74 (95)	M10 x 1.25	0.79 (12.5)	0.83 (21)	0.24 (6)	0.10 (2.5)
C-F95-SIT-M10 PFG95-SIT-M10	3.74 (95)	M10 x 1.25	0.79 (12.5)	0.83 (21)	0.24 (6)	0.10 (2.5)
C-F95-NBR-G14 PFG95-NBR-G14	3.74 (95)	G1/4" female	0.79 (12.5)	0.71 (18)	0.24 (6)	-
C-F95-SIT-G14 PFG95-SIT-G14	3.74 (95)	G1/4" female	0.79 (12.5)	0.71 (18)	0.24 (6)	-



ANVER Item No.	øA in. (mm)	øB in. (mm)	øC in. (mm)	øD in. (mm)	E in. (mm)	F in. (mm)	G in. (mm)	H in. (mm)
C-F120-NBR PFG120-NBR	4.72 (120)	0.55 (14)	0.55 (14)	0.79 (20)	1.00 (25.4)	0.24 (6)	4x ø8.7 x ø40	0.59 (1.5)
C-F120-SIT PFG120-SIT	4.72 (120)	0.55 (14)	0.55 (14)	0.79 (20)	1.00 (25.4)	0.24 (6)	4 x ø8.7 x ø40	0.59 (1.5)
C-F150-NBR PFG150-NBR	5.91 (150)	0.51 (13)	0.55 (14)	0.79 (20)	1.28 (32.5)	0.35 (9)	4 x ø8.7 x ø40	0.59 (1.5)
C-F150-SIT PFG150-SIT	5.91 (150)	0.51 (13)	0.55 (14)	0.79 (20)	1.28 (32.5)	0.35 (9)	4 x ø8.7 x ø40	0.59 (1.5)
C-F200-NBR PFG200-NBR	7.87 (200)	0.51 (13)	0.47 (12)	0.79 (20)	1.48 (37.5)	0.51 (13)	4 x ø8.7 x ø40	0.59 (1.5)
C-F200-SIT PFG200-SIT	7.87 (200)	0.51 (13)	0.47 (12)	0.79 (20)	1.48 (37.5)	0.51 (13)	4 x ø8.7 x ø40	0.59 (1.5)

4072011 ➔ This spec sheet was adapted for print from our website. Additional information and photos are available at www.anver.com.