

Vacuum Cups & Suction Cups



VC Series: VC57, VC65, VC75, VC95R-2 and VC119-2



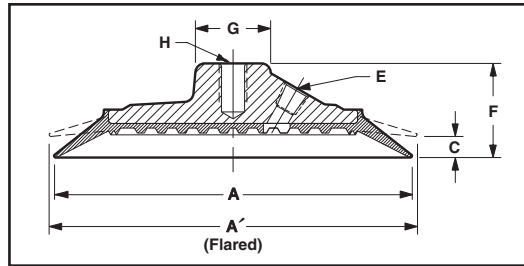
These ANVER vacuum cups feature production quality construction, with a universal design, suitable for most applications. Machine rod suspension mounting, with side vacuum port, ensures strong, long lasting, airtight connections.

Features:

- Rugged construction designed for production use.
- Long low-angle lip requires little pressure to make initial contact. This flexibility compensates for inaccuracies in cup height.
- Two inside sealing edges make contact after vacuum is attained and become the main sealing edges for safety.
- Cleated bottom eliminates puckering or slipping. Excellent for horizontal or vertical applications.
- Soft, pliable rubber bonded to a stiff aluminum hub gives these cups an easy quick-attach and a tremendous non-skid grip.

Recommended Usage:

- For light gauge sheet and other thin materials to thick blocks.
- Lightly textured surfaces, such as fiberglass panels, auto panels, etc.
- Wavy or contoured surfaces.
- These cups are flexible, making them suitable for handling cartons.



Vacuum Cup Materials:

- Standard material is Neoprene.
- Silicone and other materials are available; allow for longer lead time.

ANVER Item No.	A Dia. in. (mm)	A' Dia. in. (mm)	C Flex in. (mm)	E Port	F Height in. (mm)	G Flat in. (mm)	H Suspension Connection	*Rated Load lb (kg)	Weight lb (kg)	Suspension Assembly
VC57	5.60 (142)	5.88 (149)	0.44 (11)	1/4" NPT	1.88 (48)	1.25 (32)	1/2-13 UNC	75 (34)	0.75 (0.34)	PS57R-NBR Series
VC65	6.30 (160)	6.63 (168)	0.50 (13)	1/4" NPT	2.00 (51)	1.25 (32)	1/2-13 UNCT	100 (45)	0.90 (0.41)	PS65R-NBR Series
VC75	7.40 (188)	7.63 (194)	0.56 (14)	3/8" NPT	2.75 (70)	1.50 (38)	5/8-11 UNC	150 (68)	1.50 (0.68)	PS75R-NBR Series
VC95R-2	9.75 (248)	10.00 (254)	0.63 (16)	3/8" NPT	2.58 (66)	2.75 (70)	3/4-10 UNC	250 (113)	2.75 (1.25)	PS95R-NBR Series
VC119-2	12.25 (311)	12.50 (318)	0.50 (13)	3/8" NPT	2.50 (64)	2.75 (70)	3/4-10 UNC	500 (227)	5.44 (2.47)	PS119R-NBR Series

* The cup capacities shown above are based on 24"Hg at sea level with a safety factor of two (2) in the horizontal (flat). Vertical Load Capacity is half of the listed Horizontal Load Capacities above.

Rated Load Capacities are estimated; actual capacity will vary based on the load surface and the level of vacuum.



VC95R-2



VC119-2

➔ This spec sheet was adapted for print from our website. Additional information and photos are available at www.anver.com. 6070601